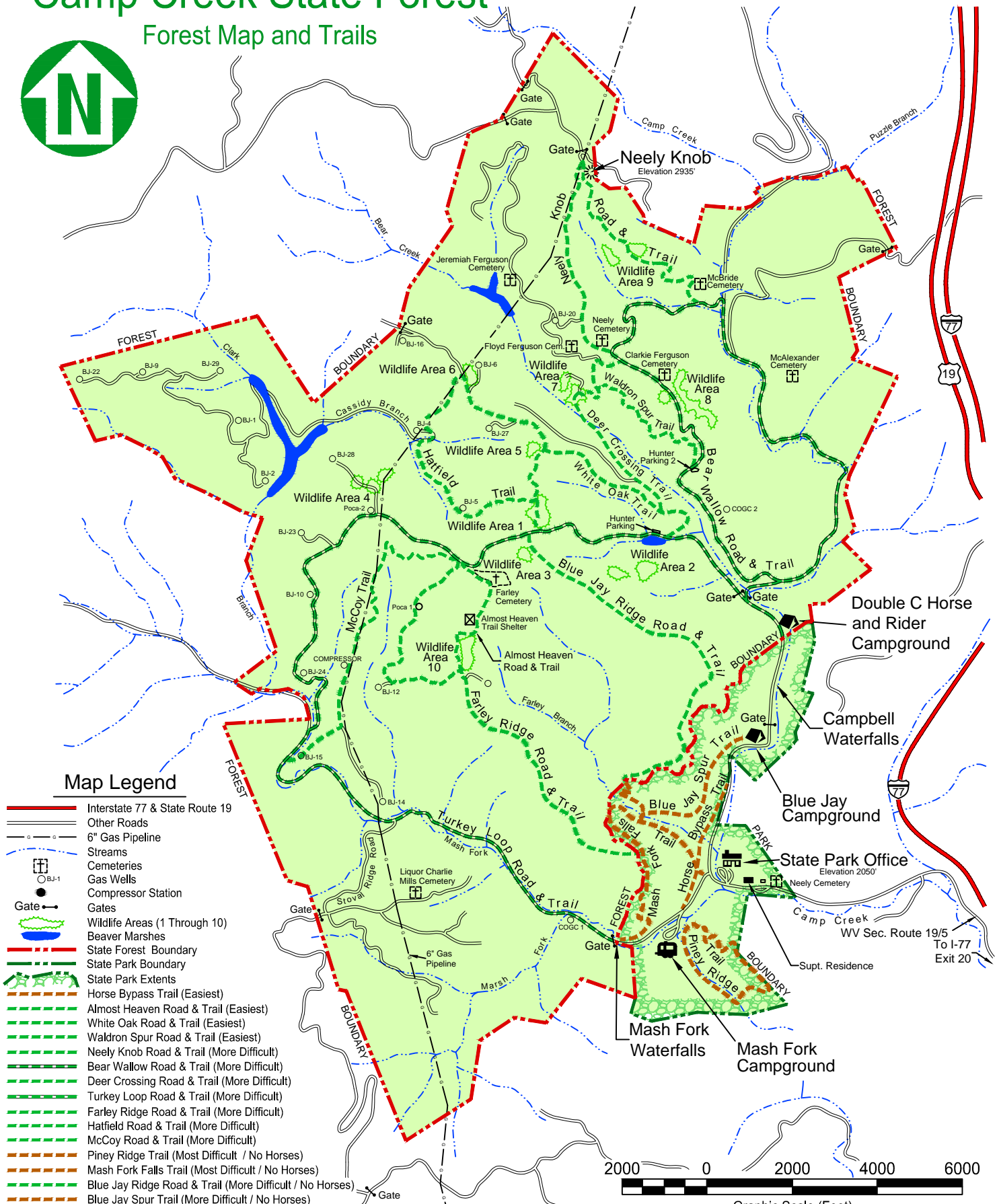


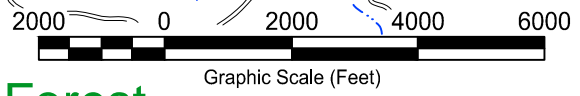
# Camp Creek State Forest

## Forest Map and Trails



### Map Legend

- Interstate 77 & State Route 19
- Other Roads
- 6" Gas Pipeline
- Streams
- Cemeteries
- Gas Wells
- Compressor Station
- Gates
- Wildlife Areas (1 Through 10)
- Beaver Marshes
- State Forest Boundary
- State Park Boundary
- State Park Extents
- Horse Bypass Trail (Easiest)
- Almost Heaven Road & Trail (Easiest)
- White Oak Road & Trail (Easiest)
- Waldron Spur Road & Trail (Easiest)
- Neely Knob Road & Trail (More Difficult)
- Bear Wallow Road & Trail (More Difficult)
- Deer Crossing Road & Trail (More Difficult)
- Turkey Loop Road & Trail (More Difficult)
- Farley Ridge Road & Trail (More Difficult)
- Hatfield Road & Trail (More Difficult)
- McCoy Road & Trail (More Difficult)
- Piney Ridge Trail (Most Difficult / No Horses)
- Mash Fork Falls Trail (Most Difficult / No Horses)
- Blue Jay Ridge Road & Trail (More Difficult / No Horses)
- Blue Jay Spur Trail (More Difficult / No Horses)



# Camp Creek State Forest

2390 Camp Creek Road, Camp Creek, WV 25820, (304) 425-9481, [www.campcreekstatepark.com](http://www.campcreekstatepark.com)