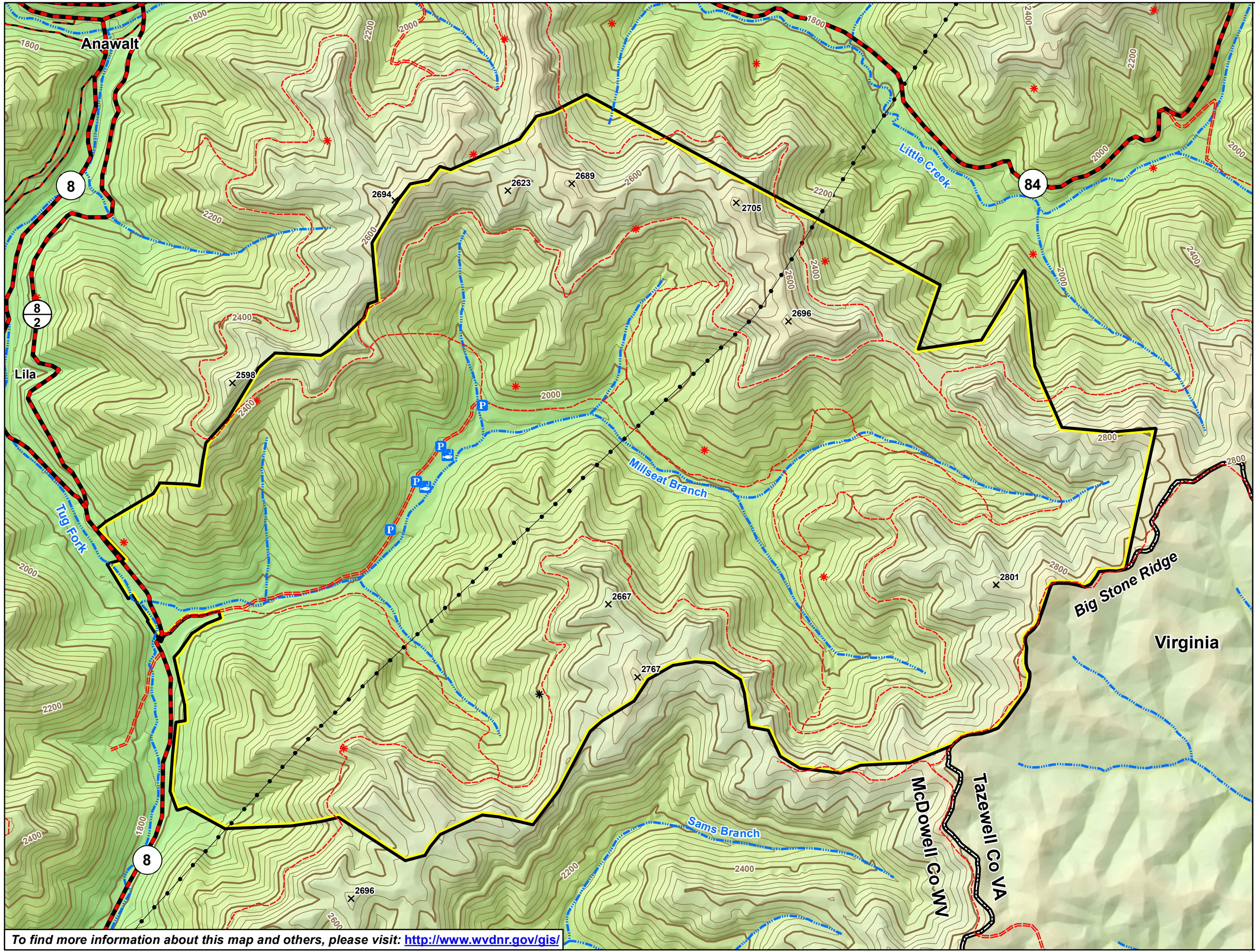
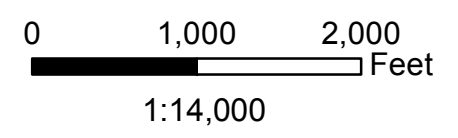
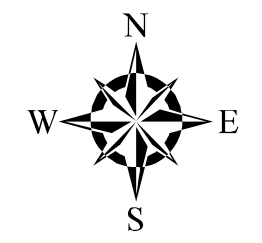


Anawalt Wildlife Management Area

McDowell County West Virginia



- * Gas Well
- * Abandoned Well
- P Parking Area
- F Fishing Access
- Paved Road
- - - Improved Road
- - - Unimproved Road/Trail
- WMA Property Boundary



Contour Interval 40 Feet
 Bold Line at Even 200 Feet
 Boundaries are Approximate



Prepared by
 WV Division of Natural Resources
 Wildlife Resources Section, GIS
 Elkins, WV 26241
 September 15, 2020

To find more information about this map and others, please visit: <http://www.wvdnr.gov/gis/>