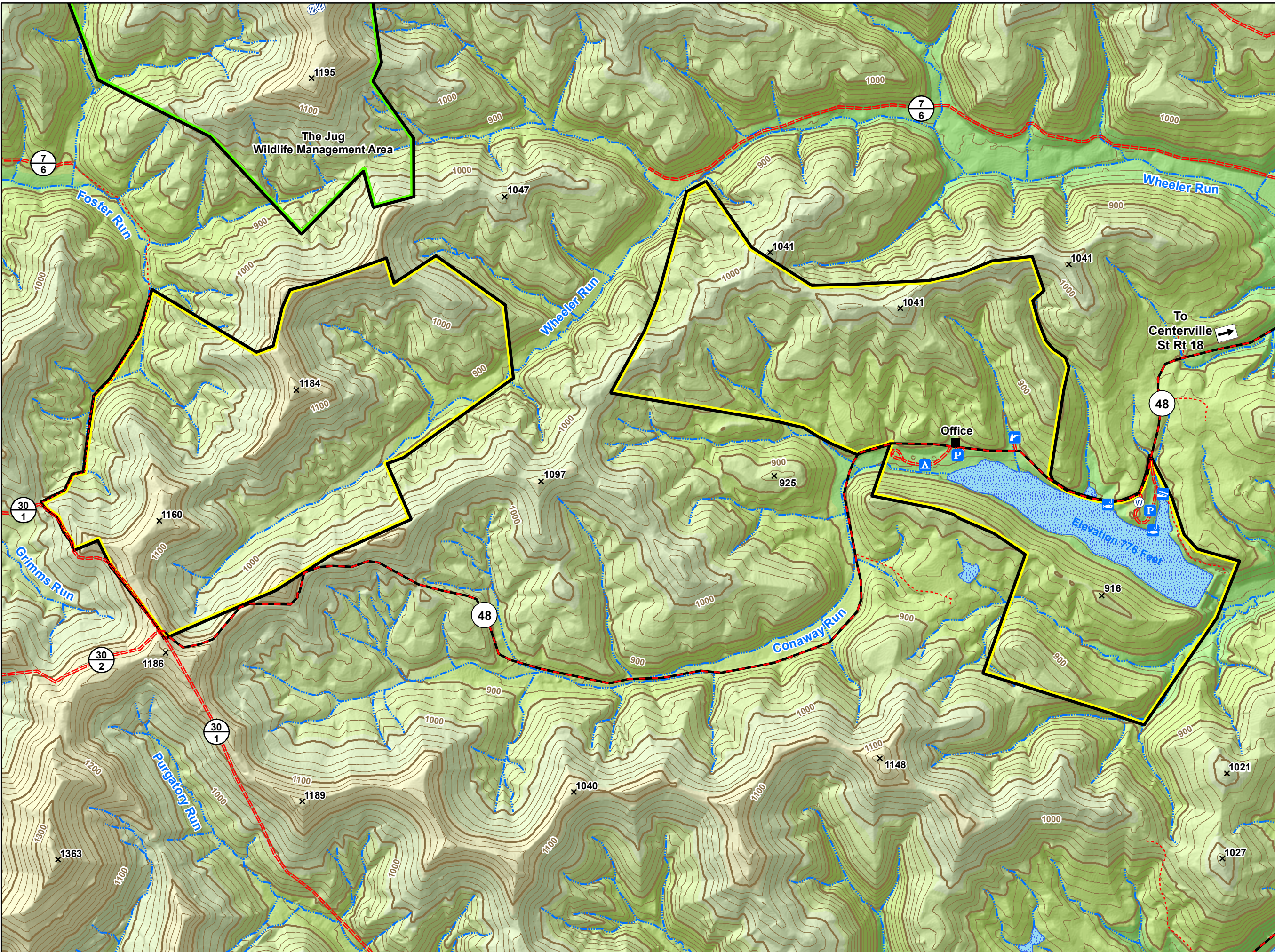
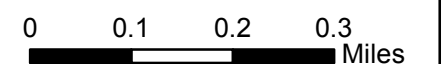


# Conaway Run Wildlife Management Area

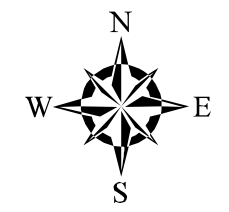
Tyler County, West Virginia



- Water Well
- Office
- Campground
- Parking Area
- Fishing Access Point
- Boat Ramp
- Shooting Range
- Paved Road
- Improved Road
- Unimproved Road / Trail
- Conaway Run Lake Wildlife Management Area
- The Jug Wildlife Management Area



1:12,000



Contour Interval 20 Feet  
Bold Line at Even 100 Feet  
Boundaries are Approximate



Prepared by  
WV Division of Natural Resources,  
Wildlife Resources Section, GIS  
Elkins, WV 26241  
November 27, 2012