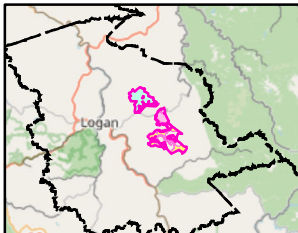


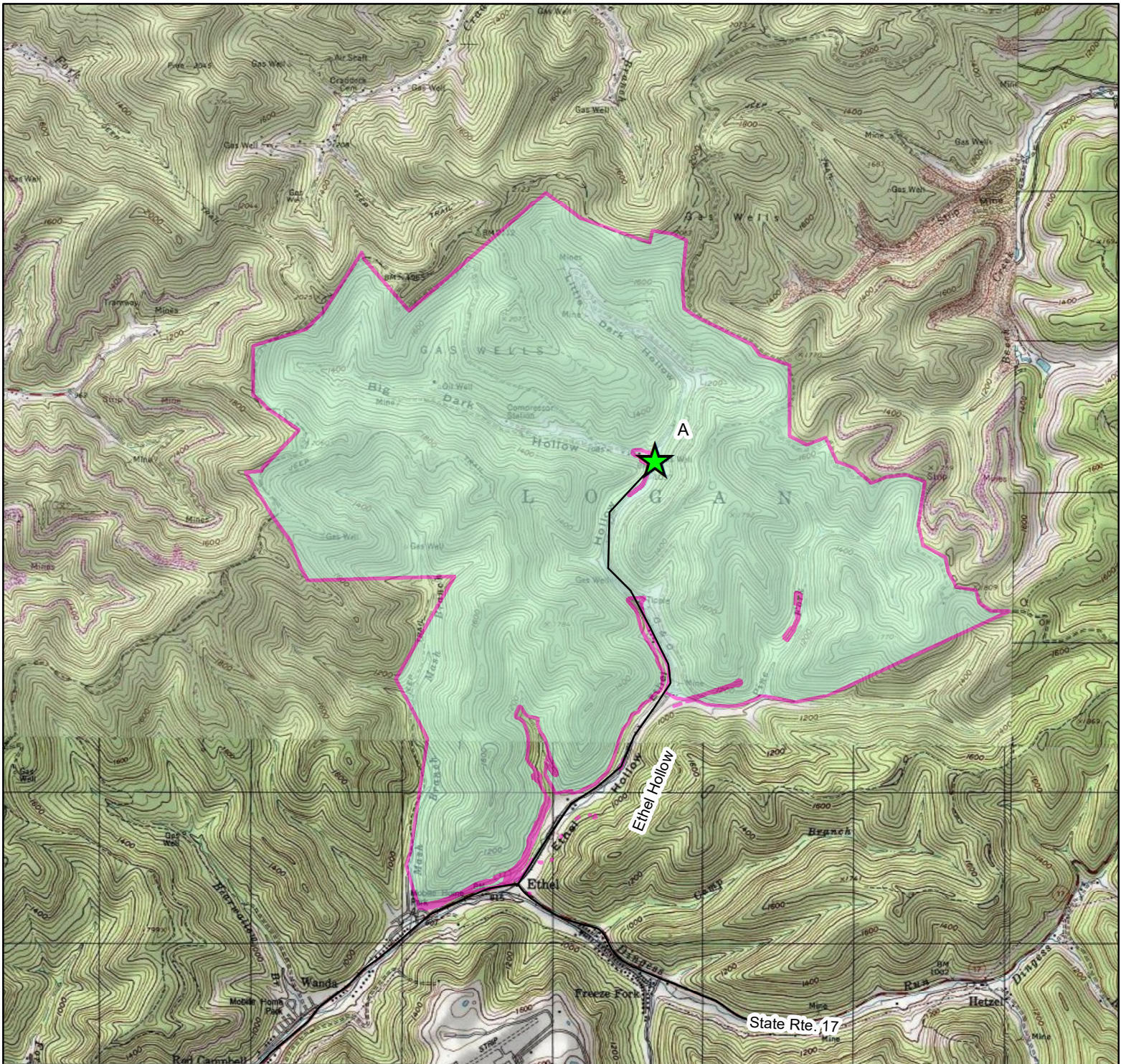
**Overview Map**

**West Virginia Department of Natural Resources  
3-Day Boar Hunt on  
WPP LLC Lands- Logan County, WV  
February 4-6, 2022**

- Hunting Area 1  
Ethel Hollow
- Hunting Area 2  
Georges Creek
- Hunting Area 3  
Slab Fork
- Designated Parking  
Areas: A-I
- Roads



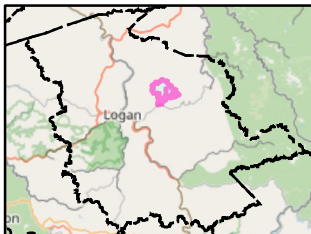
Disclaimer: No hunting is allowed off of the shown Hunting Areas. Any hunting off of the shown Hunting Areas is subject to fines and punishment to the full extent of the law. No ATVs allowed on the property. Hunters may drive vehicles to the Designated Parking Areas only and no further vehicular access is allowed onto the property. Hunters may park at your own risk along any wide spots on County Route 14 between parking areas E and I. The Slab Fork road will be closed for the entire 3 days of the boar hunt. For your safety, please don't go near any of the coal trucks, coal train cars, mining equipment or facilities of the Zigmond preparation plant. Hunters may still use the hunting area but the road will be closed and monitored.



**Hunting Area 1: Ethel Hollow**

West Virginia Department of Natural Resources  
 3-Day Boar Hunt on  
 WPP LLC Lands - Logan County, WV  
 February 4-6, 2022

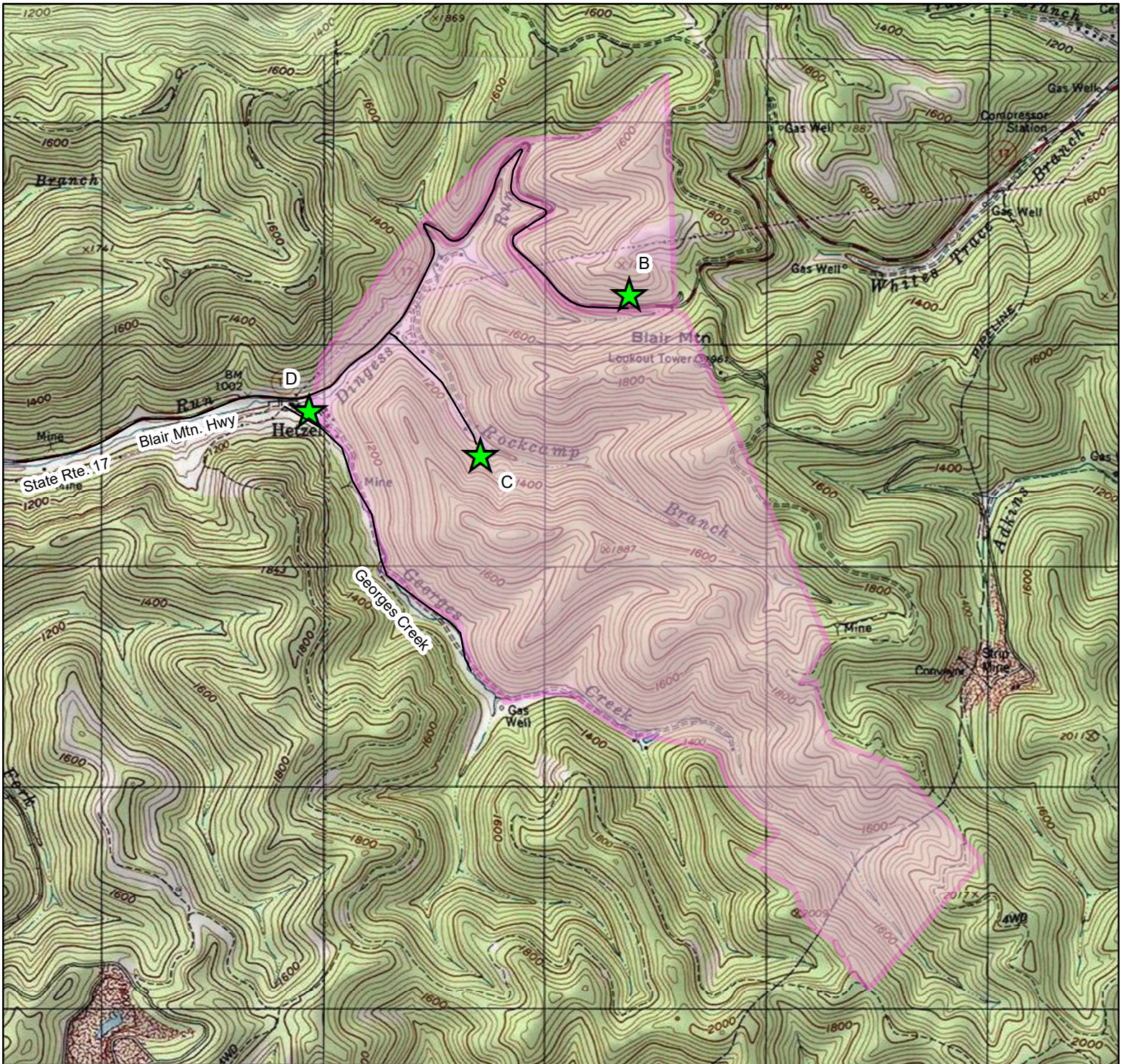
-  Hunting Area 1  
Ethel Hollow  
± 2,858 Acres
-  Designated Parking  
Area: A
-  Roads



**Designated Parking Coordinates**



Lot	Latitude (Y)	Longitude (X)
A	37.891964	-81.902083

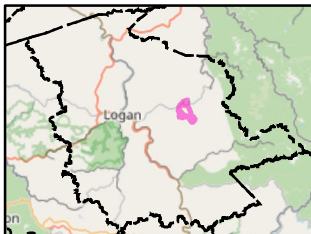
Disclaimer: No hunting is allowed off of the shown Hunting Areas. Any hunting off of the shown Hunting Areas is subject to fines and punishment to the full extent of the law. No ATV's allowed on the property. Hunters may drive vehicles to the Designated Parking Areas only and no further vehicular access is allowed onto the property. For your safety, please don't go near any ponds, mine shafts, propane tanks, gas wells or any other mining equipment located in this hunting area. This hunting area will be monitored.



**Hunting Area 2: George's Creek**

West Virginia Department of Natural Resources  
 3-Day Boar Hunt on  
 WPP LLC Lands- Logan County, WV  
 February 4-6, 2022

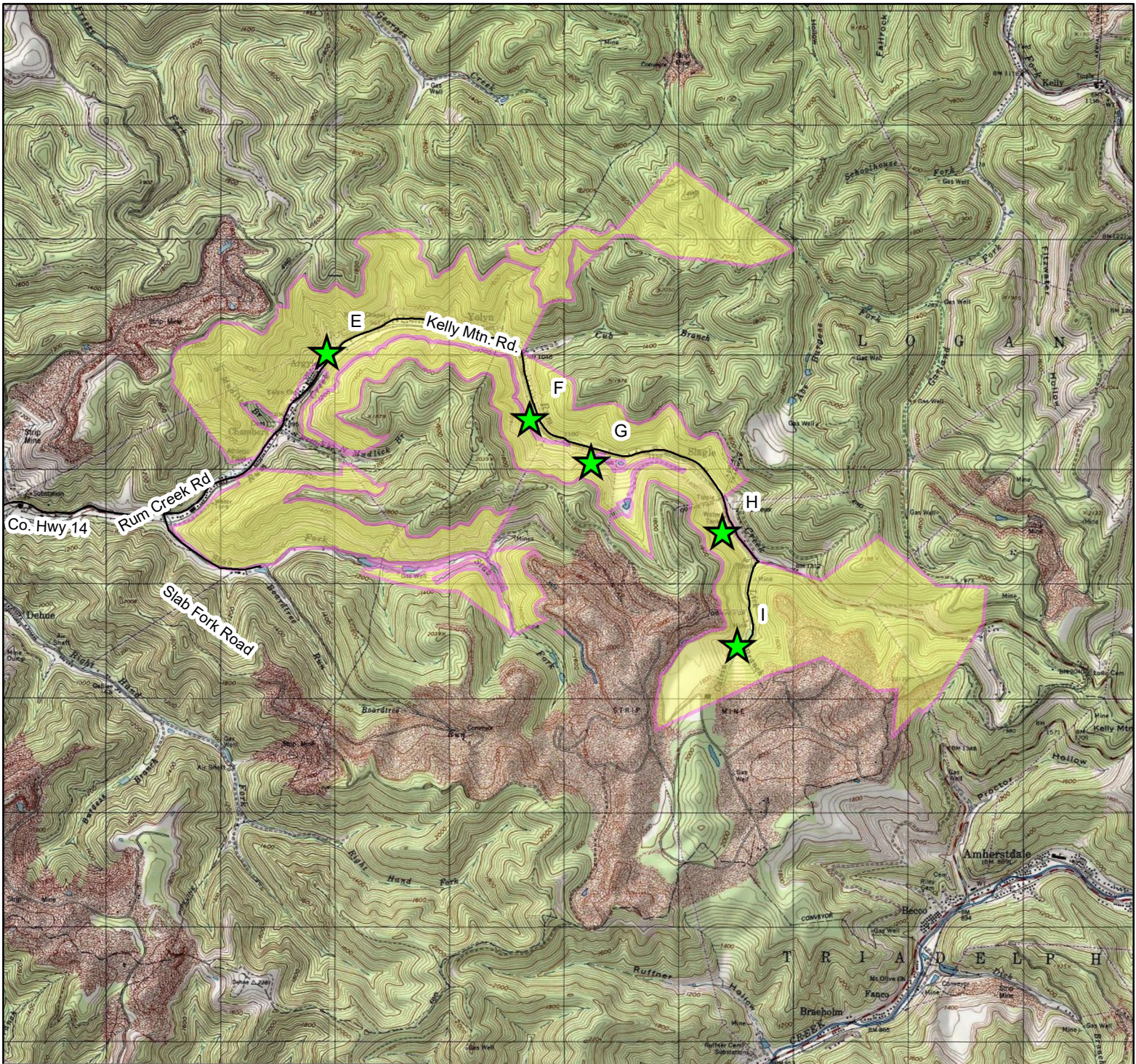
-  Hunting Area 2  
George's Creek  
± 1,185 Acres
-  Designated Parking  
Areas: B-D
-  Roads



**Designated Parking Coordinates**


Lot	Latitude (Y)	Longitude (X)
B	37.865398	-81.85974
C	37.858823	-81.867302
D	37.860545	-81.876107

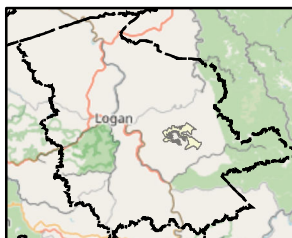
Disclaimer: No hunting is allowed off of the shown Hunting Areas. Any hunting off of the shown Hunting Areas is subject to fines and punishment to the full extent of the law. No ATV's allowed on the property. Hunters may drive vehicles to the Designated Parking Areas only and no further vehicular access is allowed onto the property. There shall be no hunting on the right hand side (West) of George's Creek Trail.



**Hunting Area 3: Slab Fork**

**West Virginia Department of Natural Resources  
3-Day Boar Hunt on  
WPP LLC Lands- Logan County, WV  
February 4-6, 2022**

-  Hunting Area 3  
Slab Fork  
± 2,553 Acres
-  Designated Parking  
Areas: E-I
-  Roads



**Designated Parking Coordinates**

Lot	Latitude (Y)	Longitude (X)
E	37.827389	-81.875814
F	37.822268	-81.855622
G	37.818938	-81.849522
H	37.813484	-81.836405
I	37.804619	-81.834848

**Disclaimer:** No hunting is allowed off of the shown Hunting Areas. Any hunting off of the shown Hunting Areas is subject to fines and punishment to the full extent of the law. No ATV's allowed on the property. Hunters may drive vehicles to the Designated Parking Areas only and no further vehicular access is allowed onto the property. Hunters may park at your own risk along any wide spots on County Route 14 between parking areas E and I. The Slab Fork road will be closed for the entire 3 days of the boar hunt. For your safety, please don't go near any of the coal trucks, coal train cars, mining equipment or facilities of the Zigmond preparation plant. Hunters may still use the hunting area but the road will be closed and monitored.

## WVDNR District Office

# 304-756-1023

<u>Designated Parking Area</u>	<u>Latitude (Y)</u>	<u>Longitude (X)</u>
A	37.891964	-81.902083
B	37.865398	-81.85974
C	37.858823	-81.867302
D	37.860545	-81.876107
E	37.827389	-81.875814
F	37.822268	-81.855622
G	37.818938	-81.849522
H	37.813484	-81.836405
I	37.804619	-81.834848

### From Man, WV to Hunting Area 1 (Near Orville, WV):

Start out going **southwest** on Bridge St toward Buffalo St.

Go 0.17 miles - Take the 2nd **right** onto Hanging Rock Hwy/ **NEW** WV-10. Continue to follow **NEW** WV-10.

Go 7.01 miles - Turn **right** onto Rum Creek Rd/County Hwy-14

Go 2.67 miles - To **Orville, WV** near **Hunting Area 1**.

### From Man, WV to Hunting Area 2 (Near Ethel, WV):

Start out going **southwest** on Bridge St toward Buffalo St.

Go 0.17 miles - Take the 2nd **right** onto Hanging Rock Hwy/ **NEW** WV-10. Continue to follow **NEW** WV-10.

Go 7.01 miles - Turn **right** onto Rum Creek Rd/County Hwy-14

Go 0.18 miles - Turn **left** onto Hanging Rock Hwy/County Hwy-210/25.

Go 3.89 miles - Turn **sharp right** onto Blair Mountain Hwy/WV-17.

Go 3.82 miles – To **Ethel, WV** near **Hunting Area 2**.

**From Man, WV to Hunting Area 3 (Near Hetzel, WV):**

Start out going **southwest** on Bridge St toward Buffalo St.

Go 0.17 miles - Take the 2nd **right** onto Hanging Rock Hwy/ **NEW** WV-10. Continue to follow **NEW** WV-10.

Go 7.01 miles - Turn **right** onto Rum Creek Rd/County Hwy-14

Go 0.18 miles - Turn **left** onto Hanging Rock Hwy/County Hwy-210/25.

Go 3.89 miles - Turn **sharp right** onto Blair Mountain Hwy/WV-17.

Go 5.89 miles – To **Hetzel, WV** near **Hunting Area 3**.

**From Logan, WV to Hunting Area 1 (Near Orville, WV):**

Start out going **southeast** on Main St toward Holland Lane.

Go 0.1 miles - Take the 1st **right** onto Holland Lane.

Go 0.2 miles - Turn **left** onto Logan Blvd/**OLD** WV-10.

Go 0.59 miles - Stay **straight** to go onto **NEW** WV-10.

Go 4.57 miles - Turn **left** onto Rum Creek Rd/County Hwy-14.

Go 2.67 miles - To **Orville, WV** near **Hunting Area 1**.

**From Logan, WV to Hunting Area 2 (Near Ethel, WV):**

Start out going **southeast** on Main St toward Holland Lane.

Go 0.1 miles - Take the 1st **right** onto Holland Lane.

Go 0.2 miles - Turn **left** onto Logan Blvd/**OLD** WV-10.

Go 0.59 miles - Take the 1st **left** onto Logan Blvd/**OLD** WV-10. Continue to follow Logan Blvd.

Go 0.04 miles - Turn **right** onto Stratton St/County Hwy-210/25. Continue to follow County Hwy-210/25.

Go 1.05 miles - Turn **slight left** onto Blair Mountain Hwy/WV-17.

Go 3.82 miles – To **Ethel, WV** near **Hunting Area 2**.

**From Logan, WV to Hunting Area 3 (Near Hetzel, WV):**

Start out going **southeast** on Main St toward Holland Lane.

Go 0.1 miles - Take the 1st **right** onto Holland Lane.

Go 0.2 miles - Turn **left** onto Logan Blvd/**OLD** WV-10.

Go 0.59 miles - Take the 1st **left** onto Logan Blvd/**OLD** WV-10. Continue to follow Logan Blvd.

Go 0.04 miles - Turn **right** onto Stratton St/County Hwy-210/25. Continue to follow County Hwy-210/25.

Go 1.05 miles - Turn **slight left** onto Blair Mountain Hwy/WV-17.

Go 5.89 miles – To **Hetzel, WV** near **Hunting Area 3**.