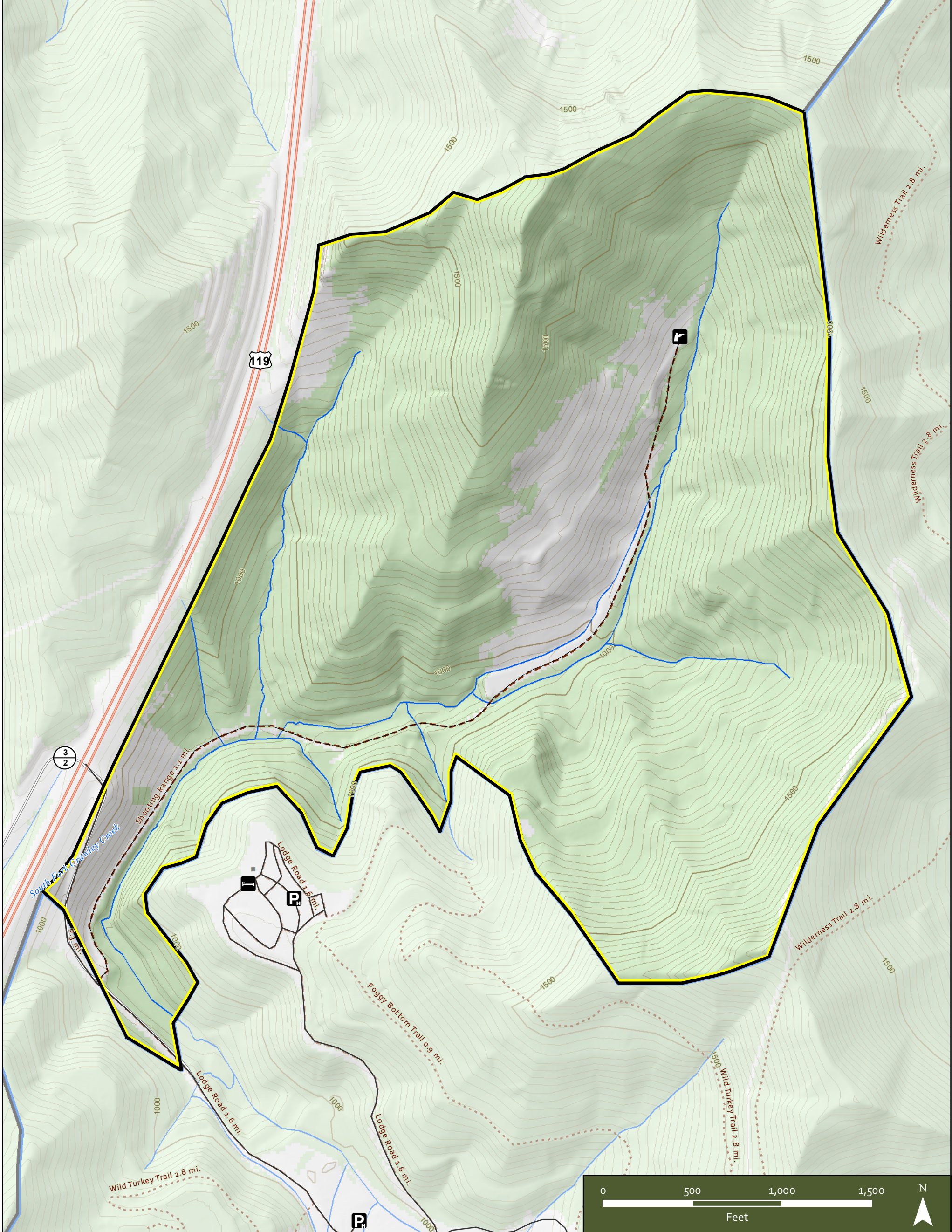


CHIEF LOGAN WILDLIFE MANAGEMENT AREA

Logan County, West Virginia



- | | | | |
|-----------------------|------------------------|-------------------------|-----------------------------------|
| Hunter Access Parking | WMA Boundary | US Highways | Hunter Access Trails (Improved) |
| Shooting Range | Chief Logan State Park | Secondary County Routes | Hunter Access Trails (Unimproved) |
| Lodge | | Streets | |

