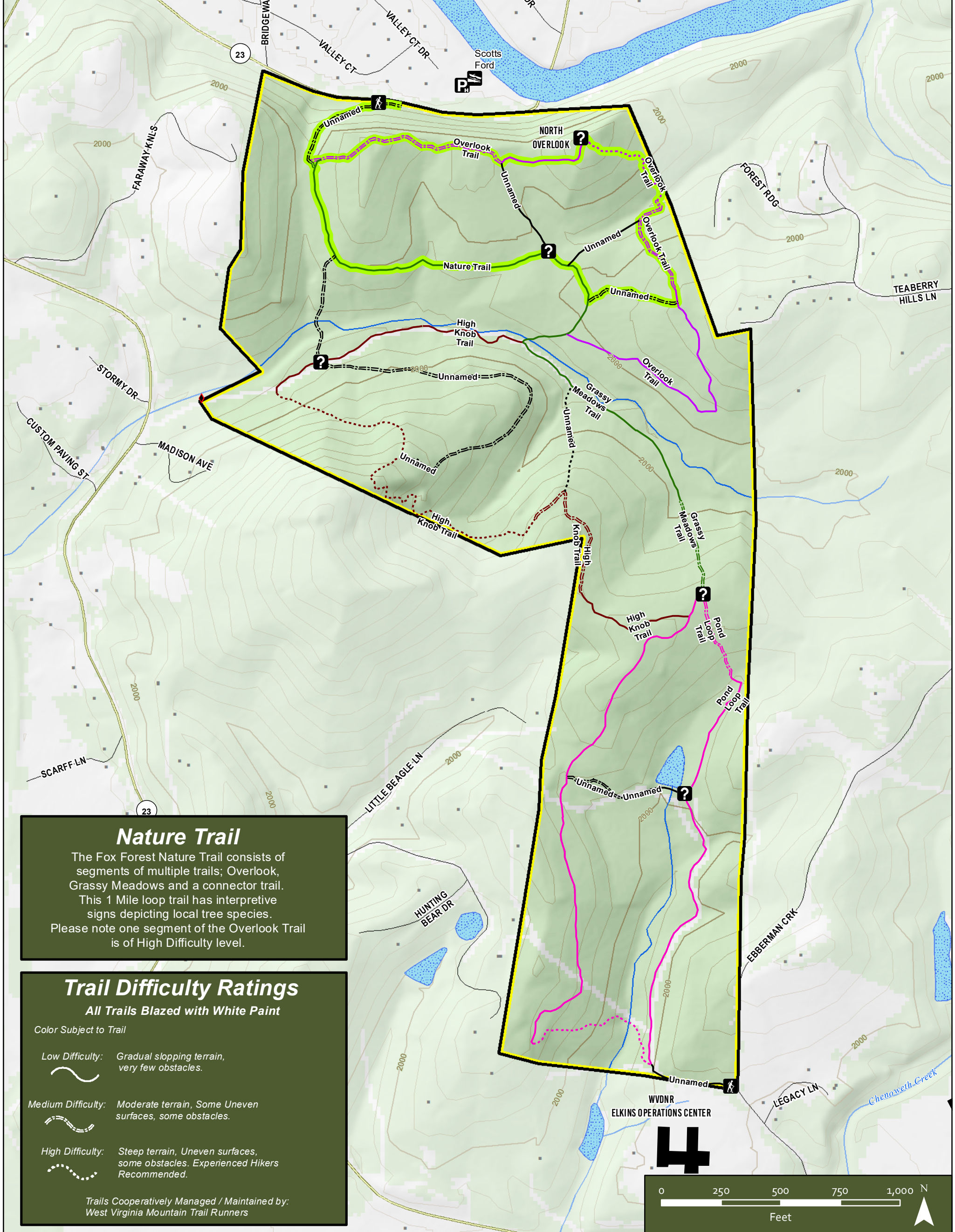


FOX FOREST WILDLIFE MANAGEMENT AREA

Randolph County, West Virginia



Nature Trail
 The Fox Forest Nature Trail consists of segments of multiple trails; Overlook, Grassy Meadows and a connector trail. This 1 Mile loop trail has interpretive signs depicting local tree species. Please note one segment of the Overlook Trail is of High Difficulty level.

Trail Difficulty Ratings
 All Trails Blazed with White Paint

Color Subject to Trail

Low Difficulty: Gradual sloping terrain, very few obstacles.

Medium Difficulty: Moderate terrain, Some Uneven surfaces, some obstacles.

High Difficulty: Steep terrain, Uneven surfaces, some obstacles. Experienced Hikers Recommended.

Trails Cooperatively Managed / Maintained by: West Virginia Mountain Trail Runners



- [Boat icon] Boating Access (Ramp)
- [P icon] Hunter Access Parking
- [Red line icon] Interstates
- [Green line icon] County Routes
- [Question mark icon] Kiosk
- [Red diamond icon] Gates
- [Orange line icon] US Highways
- [Grey line icon] Secondary County Routes
- [Hiker icon] Trail Head
- [Yellow outline icon] WMA Boundary
- [Brown line icon] State Routes
- [Black line icon] Streets

