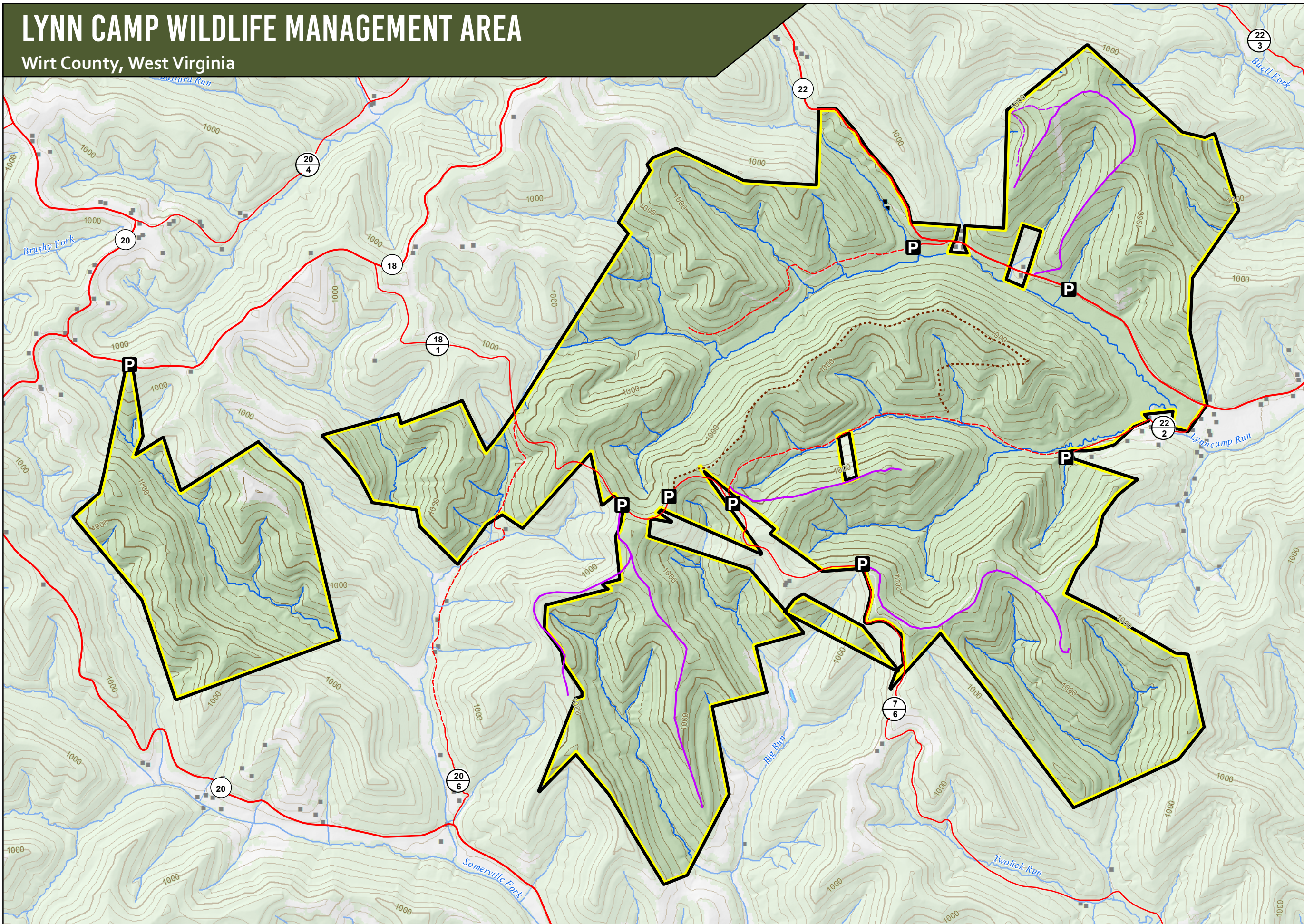


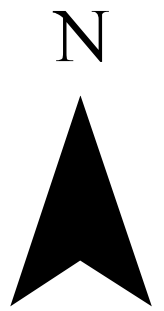
LYNN CAMP WILDLIFE MANAGEMENT AREA

Wirt County, West Virginia



Legend

- Parking Areas
- Hunter Access Trail
- Secondary County Routes
- County Highway - Poor or Impassable
- WMA Road - Improved
- WMA Road - Poor or Impassable
- WMA Boundary



0 1,000 2,000 Feet

