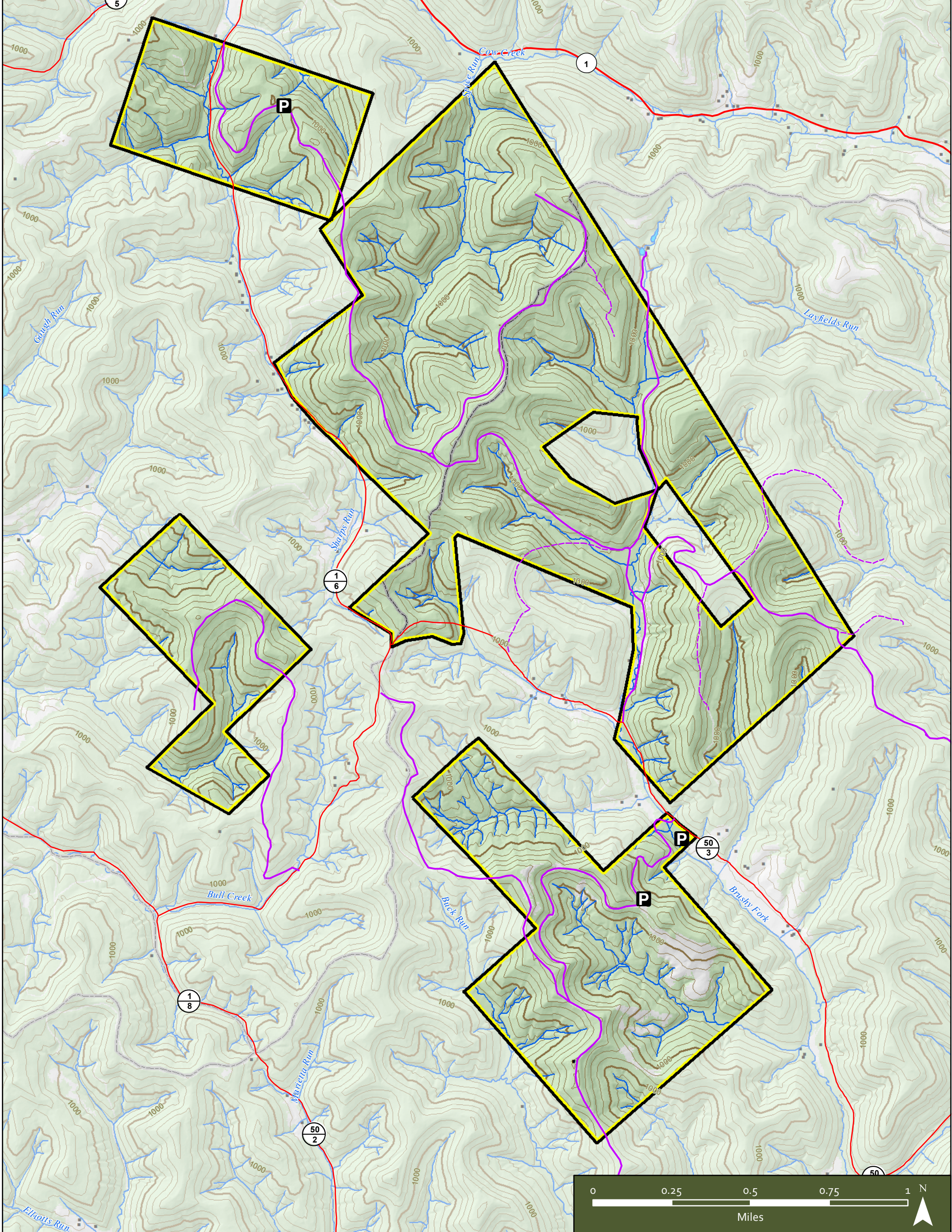


SAND HILL WILDLIFE MANAGEMENT AREA

Ritchie & Pleasants Counties, West Virginia



- Fishing Access
- Boating Access (Carry/Slide)
- Boating Access (Ramp)

P Parking Areas

- Secondary County Routes
- County Highway - Poor or Impassable

- Possible Restrictions
- No ATV's
 - WMA Road - Improved
 - WMA Road - Poor or Impassable

WMA Boundary

