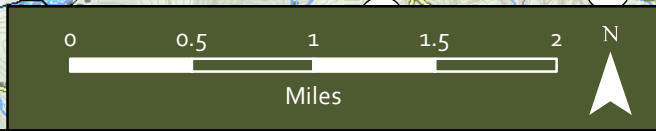
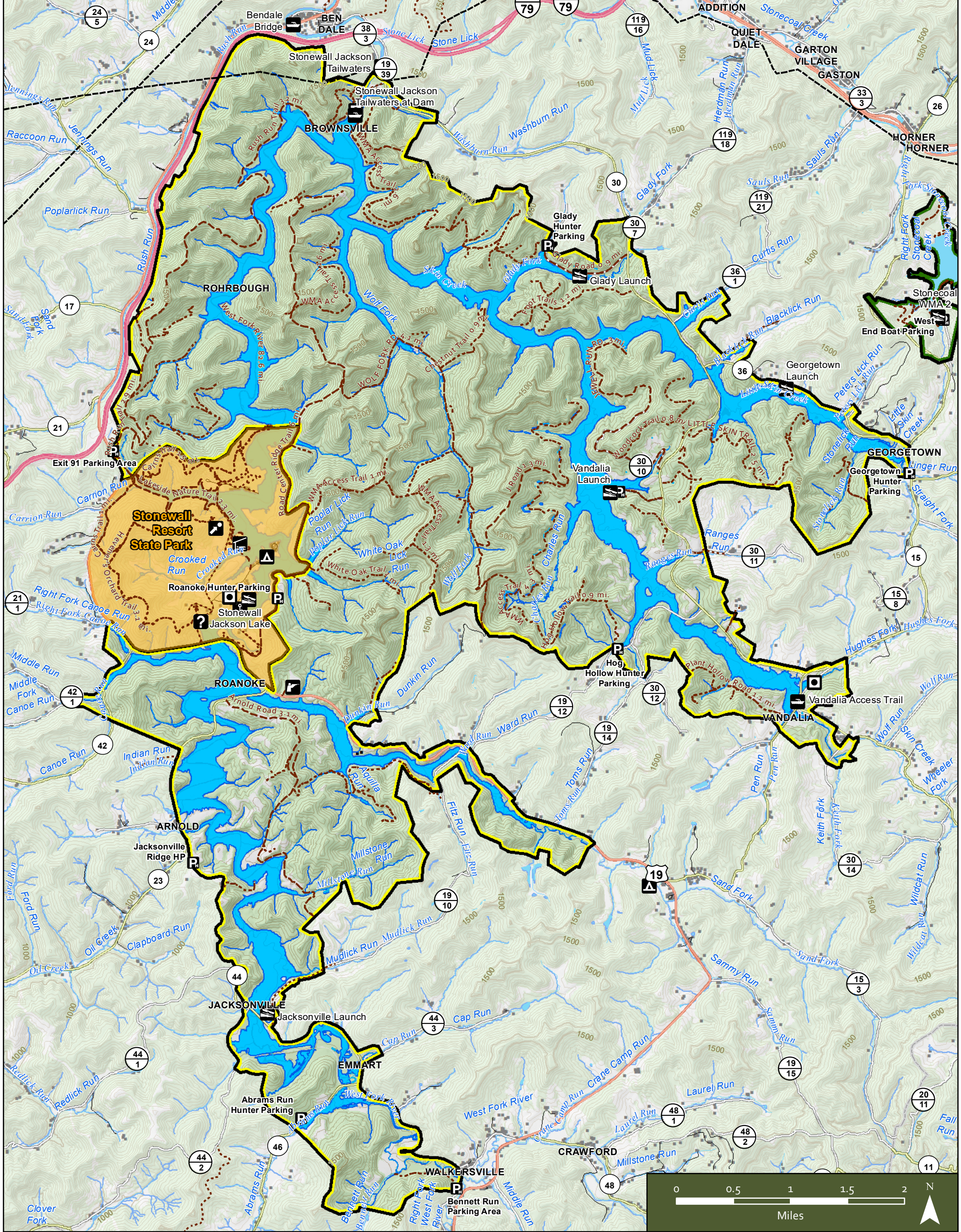


STONEWALL JACKSON LAKE WILDLIFE MANAGEMENT AREA

Lewis County, West Virginia



- | | | | |
|--------------------------------|------------|----------------------------|-----------------------------------|
| Fishing Access | Club House | Stonecoal WMA | County Routes |
| Boating Access (Carry / Slide) | Kiosk | Stonewall Jackson Lake WMA | Secondary County Routes |
| Boating Access (Ramp) | Lodge | Interstates | Streets |
| Hunter Access Parking | Marina | US Highways | Hunter Access Trails (unimproved) |
| Campground | Office | State Routes | Hunter Access Trails (improved) |
| Shooting Range | | | Powerlines |

