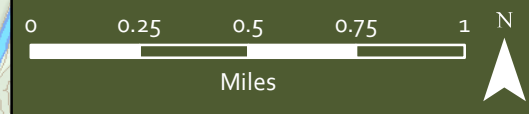
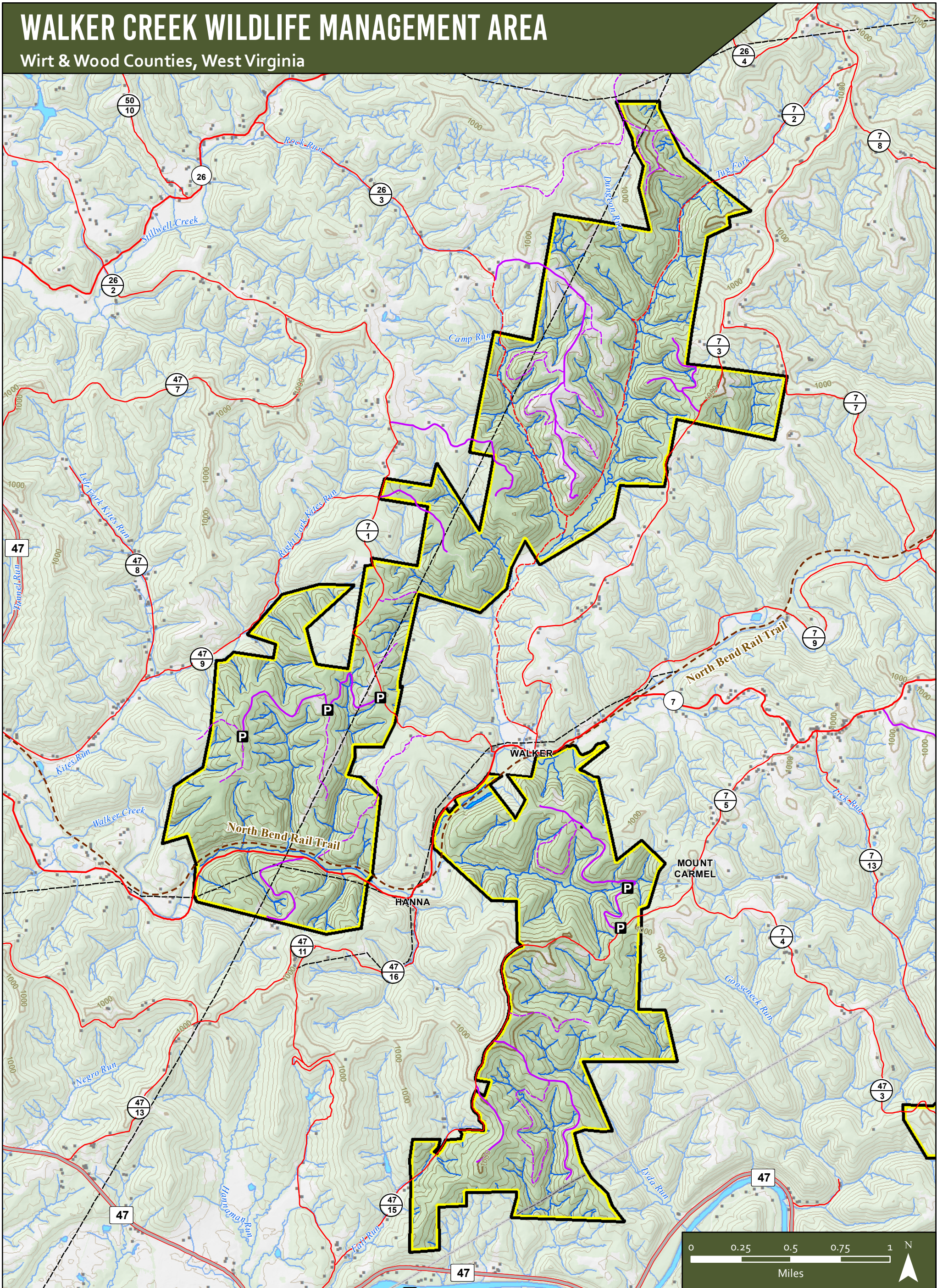


WALKER CREEK WILDLIFE MANAGEMENT AREA

Wirt & Wood Counties, West Virginia



- Fishing Access
- Boating Access (Carry/Slide)
- Boating Access (Ramp)

- Parking Areas

- Secondary County Routes
- County Highway - Poor or Impassable

- Possible Restrictions
- No ATV's
 - WMA Road - Improved
 - WMA Road - Poor or Impassable

- North Bend Rail Trail
- Powerlines
- WMA Boundary

